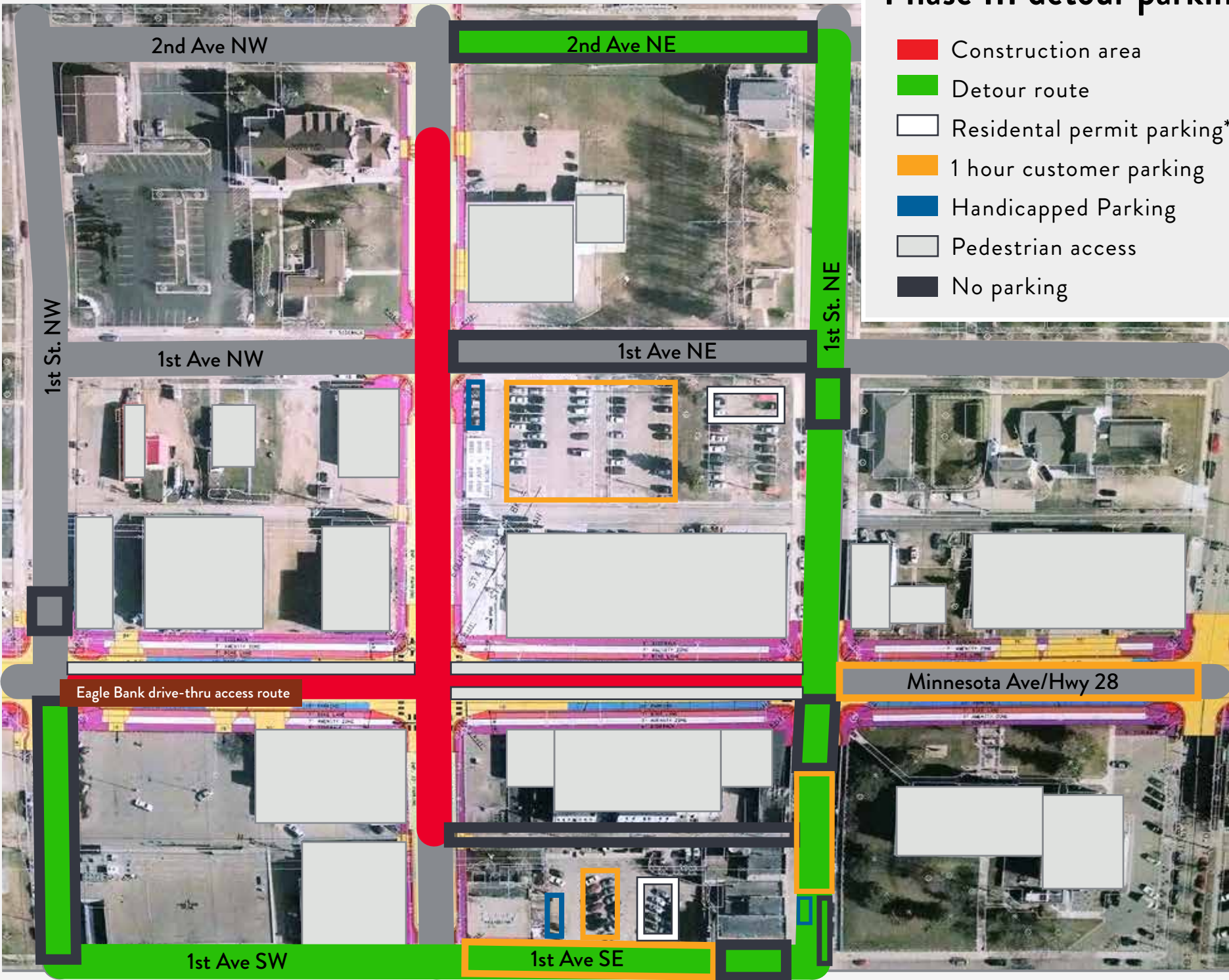


# Phase III detour parking map

- Construction area
- Detour route
- Residential permit parking\*
- 1 hour customer parking
- Handicapped Parking
- Pedestrian access
- No parking

\*Residential parking permits are available at Glenwood City Hall. Parking is limited and is on a first-come, first-served basis.



The Complete Streets reconstruction project is a moving operation. Detour routes and parking restrictions are subject to change. Watch for signs and updates as changes occur. Thank you for your patience and cooperation as we work to make the road safer and provide better traffic flow and access.